



Data Management & Technology

The Data Management & Technology department provides expertise for the creation, development, maintenance, and support of technologies and training programs in the Galter Library & Learning Center with a mission to serve the Feinberg School of Medicine.

Focus Area	Description
Galter Website Support	Our software developers create and maintain the technical infrastructure for the Galter website, which supports the library catalog , class registration , GalterGuides , and other education and reference activities for the Feinberg School of Medicine.
Resource Discovery & Catalog Integration Support	In concert with Collection Management and Metadata Services , we manage the implementation and technical maintenance of the library catalog discovery and delivery service through our website. We also monitor and maintain the infrastructure behind the integrated catalog searches with the Northwestern University Library on the Evanston campus.
	<p>Collect, share, and preserve the full spectrum of your work through Prism, the newly available institutional repository for the Feinberg School of Medicine. Prism preserves the intellectual works created by the Feinberg scholarly community and holds articles, conference presentations, preprints and other items created by faculty, staff, and students. Prism helps openness, maximizes reproducibility, and enhances research connections in the Feinberg community and globally to anyone with access to the internet. The Data Management & Technology department provides technical development and support for Prism, working closely with the Research Assessment and Communications and Research and Information Services departments in Galter.</p> <ul style="list-style-type: none"> • Search or browse the content of Prism • Search the Online Prism Guide • Get assistance with or provide feedback on Prism
Research Information Management Systems 	<p>Symplectic Elements, a data aggregator that stores career profiles and research output for Feinberg-affiliated researchers, provides publication data feeds to a variety of systems across Feinberg as well as support for research impact analysis and reporting. Our collaboration with Galter's Metrics and Impact Core helps generate reports for use in grant applications and renewals, progress reports, and a host of other activities for Feinberg departments and centers.</p>
Galter DataLab	<p>The DataLab is focused on collaborative innovation, training & development, and connecting faculty, staff, and students in the Feinberg School of Medicine to data-related resources here at Northwestern. Through our free DataClinic service, we provide consultation and training for all stages of the research data life cycle and link researchers with experts who can help to resolve issues. We engage the research community by providing training and hosting and sponsoring events and workshops that support a range of technical topics and promote best practices related to data management, reproducibility, compliance with data sharing policies, and open science. Our services and projects reflect our commitment to good data practices and a collaborative culture at Feinberg and beyond.</p>

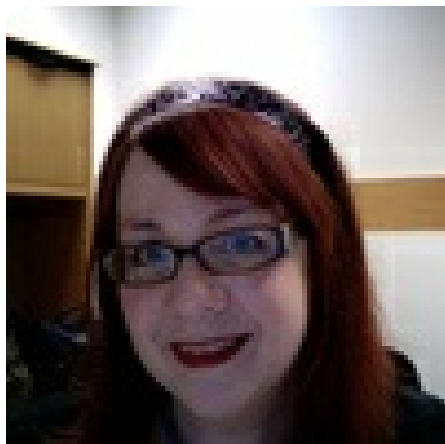
Staff



Matt Gorman

Matt Carson

- Head, Data Management & Technology / Senior Research Data Scientist
- 312-503-5321
- [Email Matt](#)
- [Professional website](#)



Pamela Shaw

- Biosciences & Bioinformatics Librarian/NIH Public Access Compliance Reporter (PACR)
- 312-503-8689
- [Email Pamela](#)
- [Professional website](#)



Austin Sharp

- Developer
- 312-503-7074
- [Email Austin](#)
- Professional Website



Sara Gonzales

- Senior Data Librarian
- 312-503-1209
- [Email Sara](#)
- [Professional Website](#)



Guillaume Viger

- Senior Developer
- 312-503-3664
- [Email Guillaume](#)
- [Professional Website](#)



Eric Newman

- Developer
- 312-503-9351

- [Email Eric](#)
- Professional Website



Matthew Baumann

- Developer
- 312-503-0421
- [Email Matthew](#)



Pearl Go

- [GREI](#) Data Librarian
- 312-503-3623
- [Email Pearl](#)

Printed: Saturday, June 7, 2025 8:12 PM

Source: <https://galter.northwestern.edu/about/data-management-and-technology.pdf>